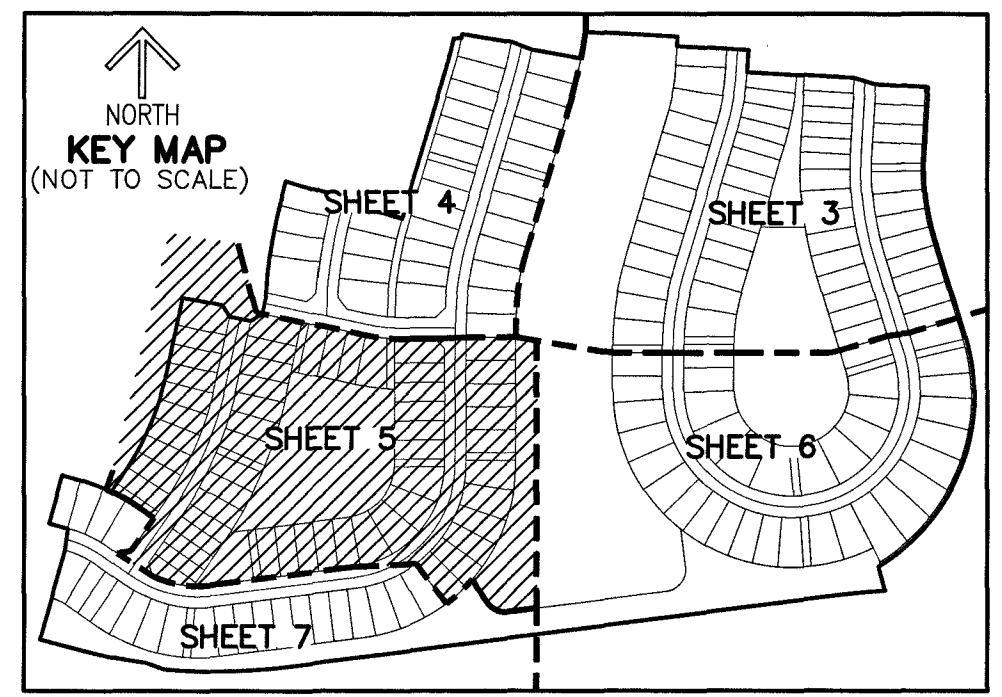


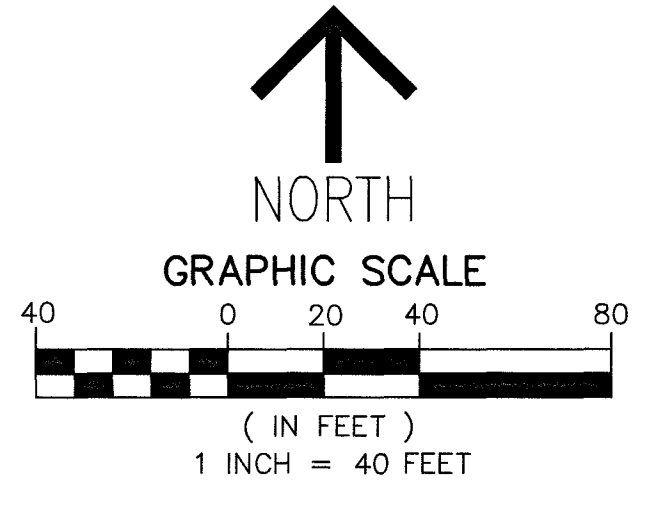
CRESSWIND PALM BEACH PHASE 5

A PORTION OF SECTIONS 6 AND 7, TOWNSHIP 43 SOUTH, RANGE 41 EAST, CITY OF WESTLAKE, PALM BEACH COUNTY, FLORIDA.

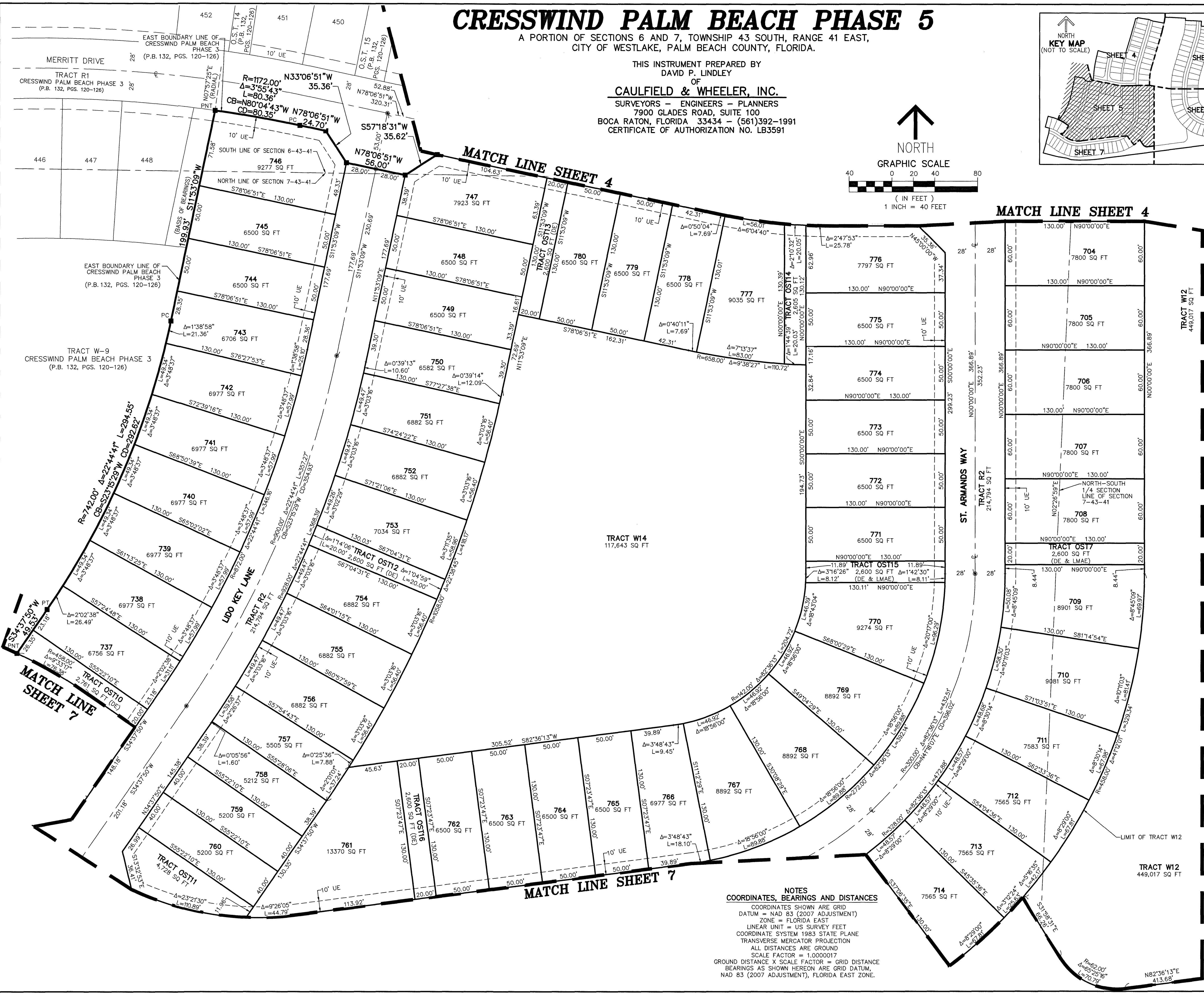
THIS INSTRUMENT PREPARED BY
DAVID P. LINDLEY
OF
CAULFIELD & WHEELER, INC.
SURVEYORS - ENGINEERS - PLANNERS
7900 GLADES ROAD, SUITE 100
BOCA RATON, FLORIDA 33434 - (561)392-1991
CERTIFICATE OF AUTHORIZATION NO. LB3591



184



SHEET 5 OF 7



- LEGEND/ABBREVIATIONS**
- ⊖ - CENTERLINE
 - Δ - DELTA (CENTRAL ANGLE)
 - CB - CHORD BEARING
 - CD - CHORD DISTANCE
 - DE - DRAINAGE EASEMENT
 - E - EASTING (WHEN USED WITH COORDINATES)
 - N - NORTHING (WHEN USED WITH COORDINATES)
 - L - ARC LENGTH
 - LMAE - LAKE MAINTENANCE ACCESS EASEMENT
 - LAE - LIMITED ACCESS EASEMENT
 - LB - LICENSED BUSINESS
 - (R) - RADIAL LINE
 - O.S.T./O.S.T. - OPEN SPACE TRACT
 - PC - POINT OF CURVATURE
 - PT - POINT OF TANGENCY
 - PNT - POINT OF NON-TANGENCY
 - PRC - POINT OF REVERSE CURVATURE
 - R - RADIUS
 - RPE - RURAL PARKWAY EASEMENT
 - UE - UTILITY EASEMENT
 - P.B. - PLAT BOOK
 - R.P.B. - ROAD PLAT BOOK
 - PG./PGS. - PAGE/PAGES
 - 6-43-41 - SECTION 6, TOWNSHIP 43 SOUTH, RANGE 41 EAST
 - NAD - NORTH AMERICAN DATUM
 - ⊙ - SET PERMANENT CONTROL POINT NAIL AND DISK STAMPED "C&W LB 3591"
 - - SET PERMANENT REFERENCE MONUMENT SET 5/8" IRON ROD WITH CAP STAMPED "C&W LB 3591"
 - - FOUND PERMANENT REFERENCE MONUMENT 4" x 4" x 24" CONCRETE MONUMENT WITH DISK STAMPED "PRM LB 3591"

NOTES
COORDINATES, BEARINGS AND DISTANCES
COORDINATES SHOWN ARE GRID
DATUM = NAD 83 (2007 ADJUSTMENT)
ZONE = FLORIDA EAST
LINEAR UNIT = US SURVEY FEET
COORDINATE SYSTEM 1983 STATE PLANE
TRANSVERSE MERCATOR PROJECTION
ALL DISTANCES ARE GROUND
SCALE FACTOR = 1.0000017
GROUND DISTANCE X SCALE FACTOR = GRID DISTANCE
BEARINGS AS SHOWN HEREON ARE GRID DATUM,
NAD 83 (2007 ADJUSTMENT), FLORIDA EAST ZONE.

MATCH LINE SHEET 6

MATCH LINE SHEET 7

MATCH LINE SHEET 7

MATCH LINE SHEET 4

MATCH LINE SHEET 4